

# Institute floor plan



## 1st floor

### 1 Woodturning observation area

Our institute is the only training center in Japan where disciplines in "woodturning" and "lacquering" are taught. On weekdays, you can see through the window trainees learning woodturning skills.

### 2 Woodturning studio (Woodturning experience)

\*Advance booking is a must  
Although handling the tools is tricky with woodturning, you can get a taste of it using the lathe under expert instructions.

### 3 Rental studios

The studios are for supporting the independence of young woodturners (artisans.) Each studio has a lathe, and you can observe woodturning work through the glass window.  
\*Please note that on some days the studios are not in use.



# Woodturning Taster and Center Tour

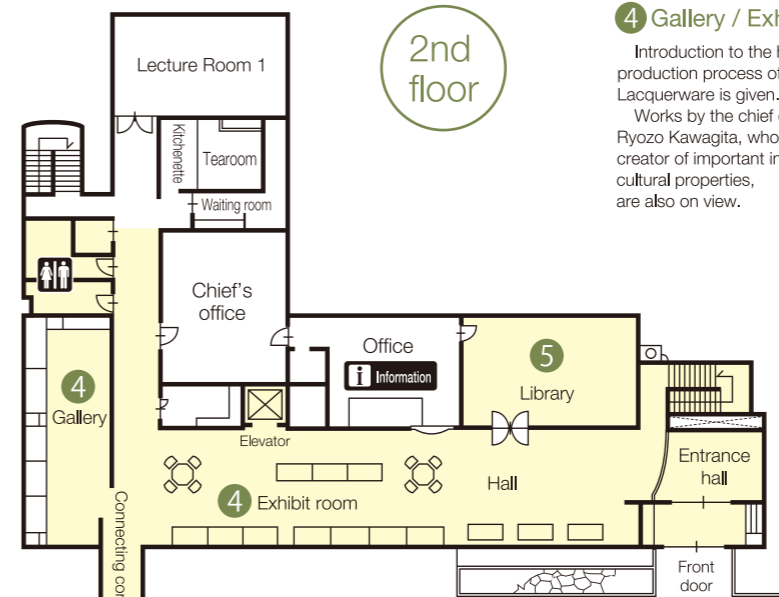
Since it is not easy to feel the value of traditional craft by just looking, you can try your hand at woodturning under the tutelage of Yamanaka Lacquerware's artisan. You can also take a tour of the Center.



	Woodturning taster	Center tour
Duration	15 mins. *Dependent upon the number of people Up to 10 people	15 mins. *Tour & taster: 30 mins.
Hours	Sat., Sun. & public holidays: 10:00 - 15:00 Weekdays: please inquire *May not be available due to training schedule	10:00 - 16:00
Fee	300 yen (actual cost) *Completed items are not given	Free
Booking	Book three days in advance for Sat., Sun. and public holidays, one month in advance for weekdays. (Telephone, FAX or email)	If you wish a member of staff to guide you, please book a day in advance. (Telephone, FAX or email)

#### Tour & Taster booking

TEL.0761-78-1696 FAX.0761-78-8696 ✉E-mail: ymnkssgc@po.incl.ne.jp



## 2nd floor

### 4 Gallery / Exhibit room

Introduction to the history and production process of Yamanaka Lacquerware is given.  
Works by the chief of the center, Ryozo Kawagita, who is also the creator of important intangible cultural properties, are also on view.



### 5 Library

You can peruse books and documents relating to lacquerware, including Yamanaka Lacquerware.



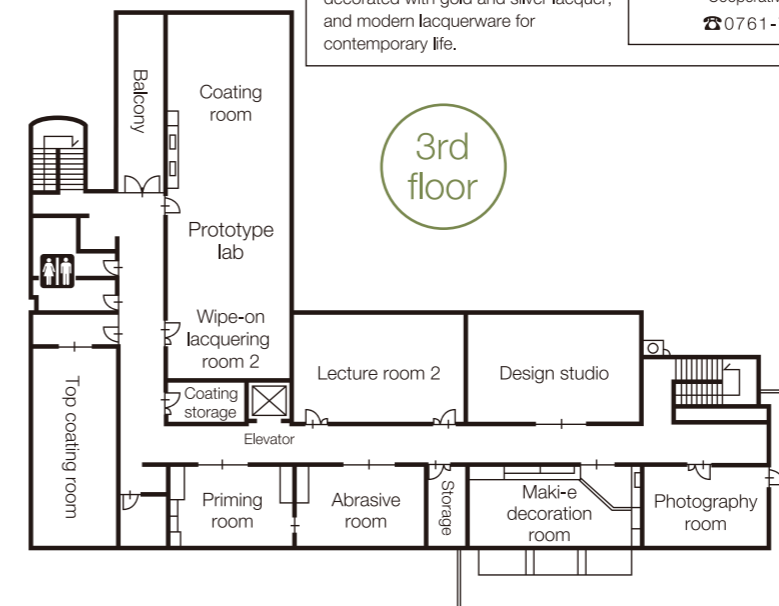
To Yamanaka Urushiza

### 6

### Yamanaka lacquerware gathered under one roof – Yamanaka Urushiza (Yamanaka Lacquerware Center)

The "Yamanaka Urushiza" shop inside Yamanaka Lacquerware Center exhibits and sells products by forty association member companies, from traditional lacquerware which highlight the beauty of wood grain to tea utensils decorated with gold and silver lacquer, and modern lacquerware for contemporary life.

- Hours: 09:00 - 17:30
  - Closed: End of the year and New Year holidays
  - Admission: Free
- Inquiries: Yamanaka Lacquerware Cooperative Association  
☎0761-78-0305



## 3rd floor

### Facility & equipment hire

The lecture rooms and equipment for producing Yamanaka lacquerware are available for rent.  
\*Advance booking is required.

<Rental fees>

Facility	Fee		
	09:00 - 12:00	13:00 - 17:00	18:00 - 21:00
Lecture room 1	1,780 yen	2,300 yen	2,300 yen
Lecture room 2	1,990 yen	2,610 yen	2,610 yen
Prototype lab	2,080 yen	2,830 yen	2,830 yen
Tearoom	1,890 yen	2,400 yen	2,400 yen

<Equipment rental fees>

Equipment	Fee
Kuromebachi (bowl for keeping lacquer)	200 yen / hour
Sandblaster	300 yen / hour
Belt sander	200 yen / hour
Large lathe	410 yen / hour

\*Inquire for details.

